

The background is a light beige color with various gold-colored decorative elements. There are large, irregular gold paint splatters in the top-left and bottom-right corners. Several gold-colored leaves are scattered around: a branch with multiple leaves in the bottom-left, and a few individual leaves in the top-right and bottom-right. A small, rectangular gold-colored tag is positioned above the text.

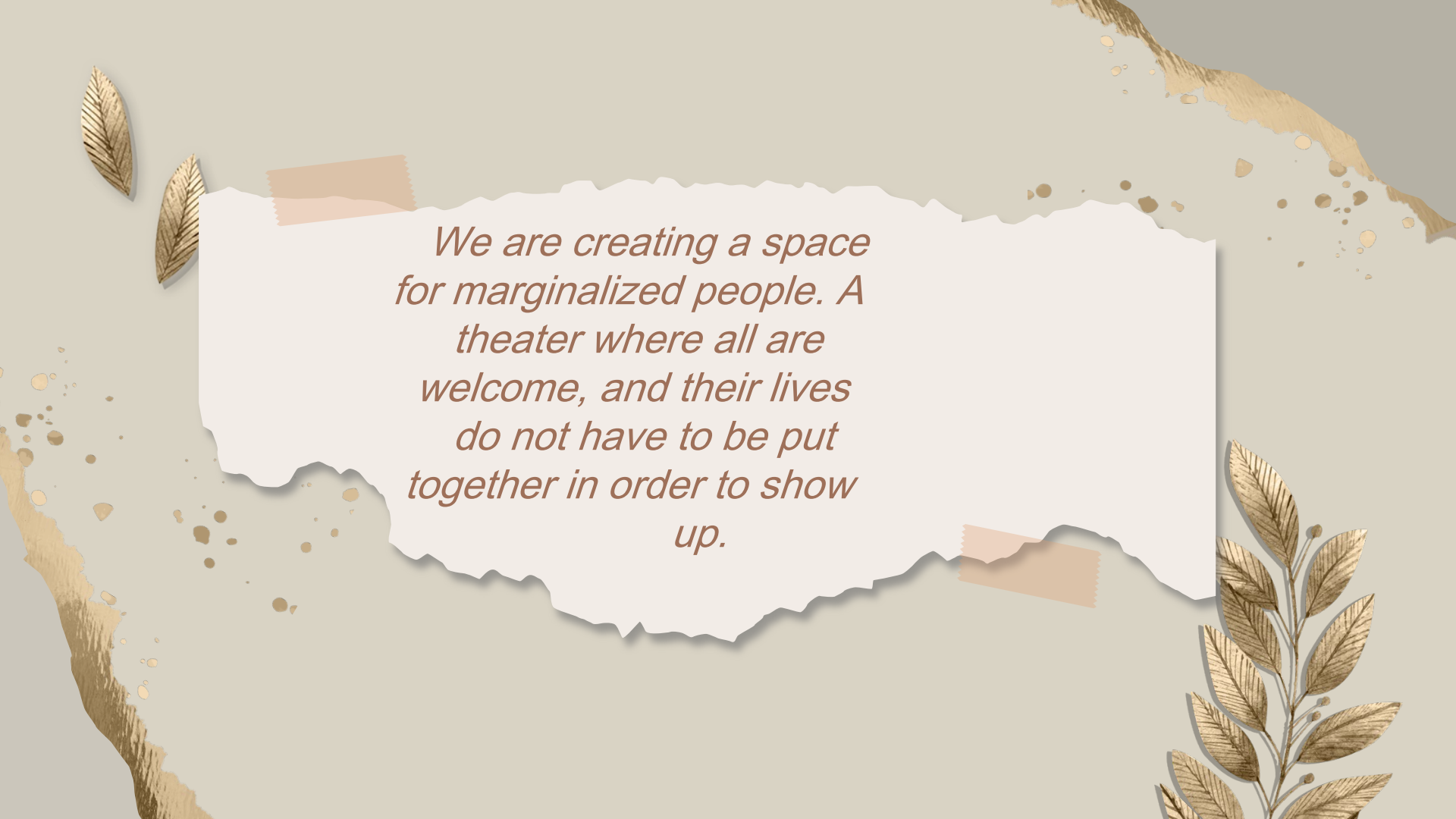
For the Broken Theater Co.

DENVER, COLORADO

Broken Love

Each one of our plays has a common theme of being a production that relates to those who have experienced love in a backwards or broken way. They discuss family relations, past relationships, and the loss of loved ones.



The image features a central white rectangular area with a torn, deckled edge. This area is set against a light beige background. The white area is bordered by a thin, irregular brown line. In the top-left and bottom-right corners of the white area, there are small, rectangular pieces of light brown paper, resembling tape or adhesive. The background is decorated with gold-colored elements: two single leaves in the top-left, a larger branch with many leaves in the bottom-right, and various small gold dots and splatters scattered across the surface.

*We are creating a space
for marginalized people. A
theater where all are
welcome, and their lives
do not have to be put
together in order to show
up.*

Ancient Play (550
BCE to 1200 CE)

Charudatta

Bhasa

Synopsis

This follows the storyline of a rich women (courtesan) finds herself in love with a poor man (Brahmin). They are tried by everyone in their society and face great challenge to be together at the end.

Connection to Theme:

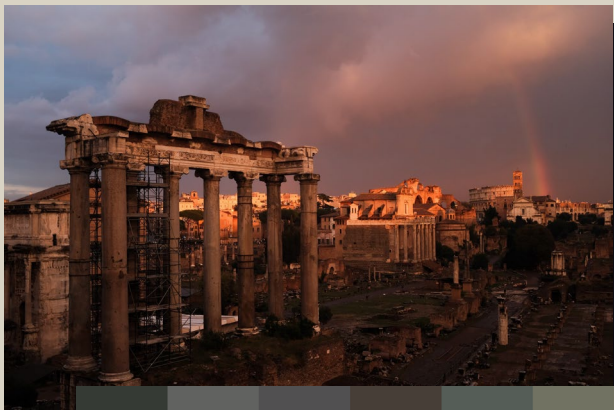
Two people are in love who are not supposed to fall in love with one another based on society's standards. They are navigating challenges that lead to broken love.



Disrupting Cannon

This play gives insight into Hindu beliefs and backgrounds. They address religion, slavery, and socioeconomic issues in the play.

Images to Describe Play





Early Modern Play
(1201 CE to 1850 CE)

She Stoops to Conquer

Oliver Goldsmith

Synopsis

This is about the Hardcastle family, their marriage and their children finding love with future spouses. Set in their countryside home.

Connection to Theme:

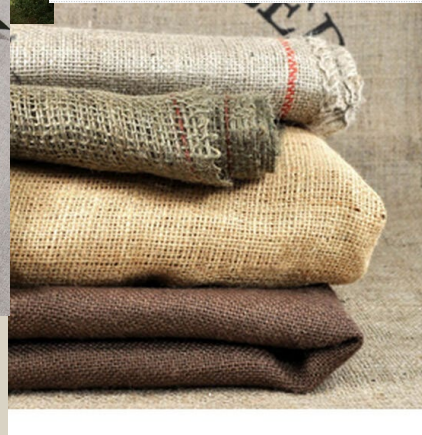
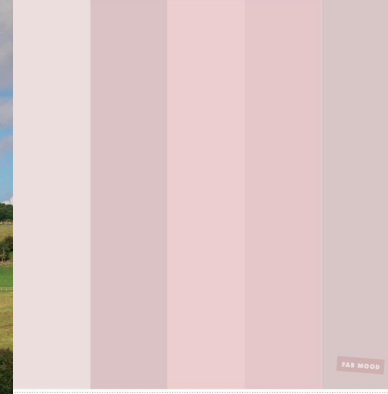
This play looks at family dynamics, marriage, and young relationships. It challenges and shows all types of love in different ways.




Disrupting Canon

I would have this play incorporate different types of love such as same sex marriage and cross cultural dating. This would disrupt the normal way of living for this time in England.

Images to Describe Play





Modern/Contemporary
Play (1851 CE to 2021
CE)

A Happy Country

Maruxa Vilalta

*Translated by Edward
Huberman*

Synopsis

This play follows the Jimenez family through their journey of navigating what it looks like to host white tourists staying in their home. They are challenging activism while also navigating family relations.

Connection to Theme:

The idea of choosing between your family or your country and fighting on behalf of your family for their freedom. There is family tension, hurt, and difficult decisions made about chasing equality.



Disrupting Cannon

This is a female, Hispanic playwright that is talking about class, poverty, and gender rolls. Each of these topics are connecting to marginalized people groups.

Images to Describe Play





Musical

Alabaster

Audrey Cefaly

Composer and Lyricist:
Thomas Constant

Synopsis

June lost her whole family in a tornado, and three years later still lives on the farm alone with two goats. She is suffering from PTSD when she is met by a female photographer who pursues her.

Connection to Theme:

June is not in a good place emotionally after losing her family, but finds this comfort and peace in her love with Alice. Their love looks different, but it is healing.

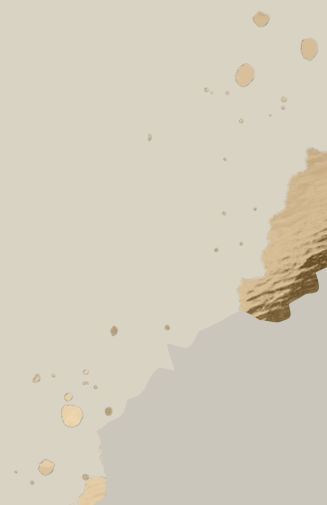
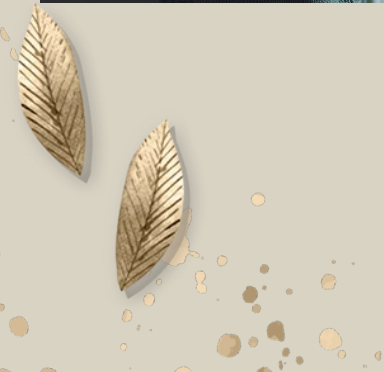
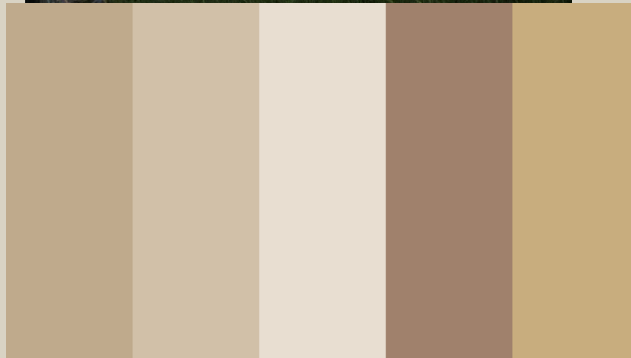
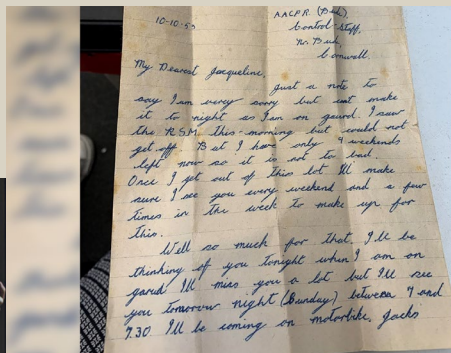


Disrupting Cannon

This is an all female play that empowers women and their voices.

It also looks at homosexual relationships and the power of love between two women.

Images to Describe the Play





THANKS!

CREDITS: This presentation template was created by **Slidesgo**, including icons by **Flaticon** and infographics & images by **Freepik**